

MITSUBISHI ELECTRIC HONG KONG

三菱電機香港



Corporate Brochure

企業宣傳冊



Company Vision

公司願景

Now known around the globe, Mitsubishi Electric was first founded in Japan over a century ago. Today, the company is proud of its wide array of reliable, high-quality electrical and electronic products serving residential, industrial, commercial and community sectors.

Our highly advanced technologies and systems enrich and augment the lives of people, and contribute to the ongoing evolution of modern lifestyles. Reaching into every corner of daily life, from individual homes to large-scale infrastructure projects, the heart of our mission is to help build a thriving, sustainable society.

We have been serving Hong Kong, Macau and Mainland China since 1966 when we established the Mitsubishi Electric Group Companies in the city. Here, we help households, businesses and facilities achieve smart and sustainable operations through a rich range of products, tailor-made solutions, comprehensive services and dedicated customer care.

三菱電機於日本創立，經營百載，時至今日已成為舉世知名的品牌，持續提供各種可靠而優質的電氣及電子產品，為家居、工業、商業和公共領域竭誠服務。

透過引入先進的科技及系統，三菱電機銳意提升大眾生活，推動現代生活模式不斷變革。藉着深入日常大小細節，涵蓋家居環境以至大型基建，三菱電機致力建設繁榮昌盛的社會，並積極推動可持續發展。

三菱電機集團公司於1966年在香港成立後，一直服務本地、澳門及內地客戶。我們提供多元化的產品、度身訂造的方案、周全完備的支援和客戶服務，協助家庭、商業客戶及公共機構實現智能及可持續發展的營運目標。



Our Philosophy

集團理念

Purpose 立企之本

We create new possibilities for a better tomorrow, with bold vision and boundless innovation.

探索不息，精進不輟，創變未來。

Guiding Principle 恪守之道

Changes for the Better

Core Values 行事之綱

BE BOLD 銳意創新

Dare to think differently. Try new ideas quickly. Turn setbacks into assets
破舊立新、快速迭代、敗中求道

CO-CREATE 精誠合作

Welcome debate. Pool our knowledge
納諫聚智、共策共贏

WITH INTEGRITY 誠實守信

Always act with integrity
始終堅持誠信為本

Mitsubishi Electric Group's Corporate Strategy —

三菱電機集團企業策略 —

Striving to become a “Circular Digital Engineering Company”

致力成為一家「循環數碼工程公司」

The Mitsubishi Electric Group is committed to becoming a “Circular Digital Engineering Company”, actively helping to overcome society's most pressing challenges and create new value. To do this, we are able to draw on our unique resources, harnessing our networks, sharing insights across the Group and consolidating and analyzing customer data in the digital realm. We continue to build on these strengths, enhancing our technological infrastructure, digital assets, and human capital.

三菱電機集團致力轉型為「循環數碼工程公司」，積極協助社會應對最迫切的挑戰，創造嶄新價值。為了實現這個願景，集團善用獨有的資源，發揮強大網絡，於集團內共享專業洞察，並整合和分析客戶在數碼領域的數據。集團將繼續發揮多方面的優勢，全面提升技術基礎設施、數碼資產和人力資本。



The Chinese University of Hong Kong
 ◆ Heat Exchange Ventilator (Lossnay)

HK Jockey Club Shatin Racecourse
 ◆ Diamond Vision® LED Screen

Advantage Data Center (Fo Tan)
 ◆ Chiller Plant Control
 ◆ PLC

AIRSIDE
 ◆ Elevators

CLP Fu On Street Substation
 ◆ 125kV Gas Transformer

The Twins
 ◆ Elevators & Escalators

Kai Tak Development Project
 ◆ Sea Water Cooling System
 ◆ Inverter

MTR
 ◆ Traction Transformer
 ◆ Transportation System
 ◆ Air Curtain

Kwong Wah Hospital Power System
 ◆ ACB

富安街變電站
 Fu On Street Substation

Xiqu Centre Ventilation System
 ◆ Inverter

AIRSIDE
 The Pavilion Forest

雙子鐘
 The Pavilion Forest

港鐵九龍灣車廠
 MTR Kowloon Bay Depot

The Pavilion Forest
 ◆ City Multi
 ◆ Power-Multi

Kerry Centre
 ◆ Elevators & Escalators

HEC Quarry Bay Substation
 ◆ 132kV Gas Transformer

High Speed Rail HK West Kowloon Station
 ◆ Platform Control and Monitoring
 ◆ MC Works
 ◆ PLC

HEC Marsh Road Substation
 ◆ 275kV Gas Transformer
 ◆ 275kV Gas Insulated Switchgear

Bank of China Tower
 ◆ Elevators & Escalators

Hysan Place
 ◆ Elevators, including Double-deck Elevators

理文商業中心
 Lee & Man Commercial Center

希慎廣場
 Hysan Place

榮光百貨
 SOGO Department Store

嘉里中心
 Kerry Centre

MEHK office & showroom
 1111 King's Road

Inverter Refrigerator with Smart Auto Mode

Thermo Bathroom Ventilator



Split-Type Residential Air Conditioner (Plasma Quad Plus)
Mini Split-Type Residential Air Conditioner
Air-purifying Dehumidifier

SOGO Department Store
 ◆ Diamond Vision® LED Screen
 ◆ Pressurized Ventilator
 ◆ Elevators & Escalators

HOME

SCHOOL



Heat Exchange Ventilator (Lossnay)
Mr. Slim Commercial Air Conditioner
Air Conducting Fan

HK Jockey Club Happy Valley Racecourse
 ◆ Diamond Vision® LED Screen
 ◆ Air Conducting Fan

Bank of China Tower
 ◆ Elevators & Escalators

瑪麗醫院
 Queen Mary Hospital

環匯廣場
 Global Trade Square

時代廣場
 Times Square

馬師道變電站
 HEC Marsh Road Substation

香港賽馬會跑馬地馬場
 HK Jockey Club Happy Valley Racecourse

香港海洋公園
 Ocean Park Hong Kong

中銀大廈
 Bank of China Tower

香港政府總部
 Central Government Offices

美孚新村
 Mei Foo Sun Chuen

匯豐
 Nam Chong Cullinan West

高鐵香港西九龍站
 High Speed Rail HK West Kowloon Station

嘉禧有限公司
 The Garden Company Limited

廣華醫院
 Kwong Wah Hospital

香港中文大學
 The Chinese University of Hong Kong

上環
 Le Mont

Social Infrastructure – Advancing People’s Quality of Life

社會基建 – 推動優質生活

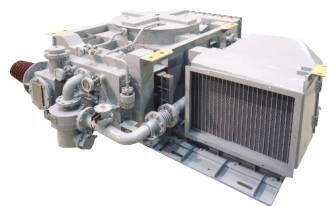
Since its inception, Mitsubishi Electric has been committed to delivering innovative, highly reliable, environmentally friendly products, technologies, systems and services that enhance quality of life in Hong Kong and Macau, serving structures from homes to major utility and public infrastructure projects. Our product portfolio is broad, spanning modern one-stop energy solutions, and railway and transportation systems that shape how we design, build, and manage essential community services.

自成立以來，三菱電機一直推陳出新，旗下產品、技術、系統及服務創新可靠，安全環保，涵蓋家居、大型公共設施以至公共基建的項目，讓香港及澳門居民享有優質好生活。三菱電機的產品種類繁多，覆蓋現代一站式能源方案以至鐵路及運輸系統，服務無遠弗屆，亦是我們設計、構思和管理重要社區服務的基礎。

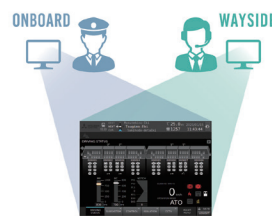
Railway Systems 鐵路系統

Urban mass transit plays a critical role in a dense city like Hong Kong. Fast and reliable transport networks support urban expansion and the development of commerce, while supporting the general well-being of the community. Mitsubishi Electric has made a name for itself as one of the prominent providers in the field of major transportation infrastructure projects, supplying a wide range of railway equipment, including traction transformers, motors, inverters, air conditioners, train information systems, and wayside monitoring and diagnostic systems (WMDS).

香港人煙稠密，公共交通極其重要。快捷可靠的運輸網絡支撐着城市擴張及商業發展，同時維持大眾的整體生活水平。三菱電機作為主要交通基建領域首屈一指的供應商，致力提供多種鐵路設備，包括牽引變壓器、馬達、變頻器、空調、列車訊息系統及路旁監測及診斷系統，務求帶來快捷完善的服務。



Traction Transformer
牽引變壓器



Wayside Monitoring and Diagnostic Systems (WMDS)
路旁監測及診斷系統



Station Energy Saving Inverter (S-EIV®)
車站節能換流系統 (S-EIV®)



Energy Systems 能源系統

Our dedication to technological research and development has allowed us to continue providing powerful, high-performing equipment and to build a brand known for its reliable, safe and efficient energy systems. We have been supplying power stations and substations in Hong Kong and Macau with these systems since 1979, complete with quality gas insulated transformers and both high and medium voltage switchgears.

三菱電機致力研究和開發創新技術，不斷推出強大且性能卓越的設備，旗下的能源系統安全可靠、符合效益，令品牌在國際間享負盛名。自1979年起，三菱電機一直為香港及澳門的發電站及分區變電站供應電力設備，並提供優質的氣體絕緣變壓器及中高電壓開關，帶來完善能源配套。

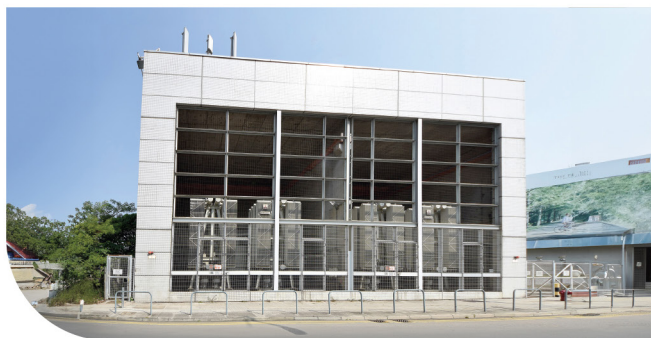
440MVA Turbine Generator
440MVA 渦輪發電機



400kV Gas Insulated Switchgear
400kV 氣體絕緣開關



132kV Gas Insulated Transformer
132kV 氣體絕緣變壓器



275kV Gas Insulated Switchgear
275kV 氣體絕緣開關



Cubicle Type Gas Insulated Switchgears (C-GIS)
開關櫃式氣體絕緣開關 (C-GIS)

Creating Smart & Green Building Solutions

創造智能環保的樓宇方案

Mitsubishi Electric is committed to building a more energy-efficient and sustainable society through its ever-growing portfolio of Smart & Green solutions for buildings and facilities. With a wide range of products and integrated applications, we provide a one-stop platform for Smart & Green technology. All products in our range are innovative, technologically advanced, highly performing and universally reliable, while our integrated devices improve central management through cost-effective, energy-saving features.

三菱電機承諾為各類樓宇及設施不斷開發智能及環保方案，建設能源效益更高的可持續社會。透過提供各類產品及綜合應用方案，三菱電機推出一站式智能及環保科技平台，帶來創新先進、高效可靠的產品，並利用綜合裝置節省能源，提高中央管理設施的成本效益。



By integrating intelligent automation systems into existing facilities, such as electrical panels, HVAC systems, and elevator monitoring systems, we can significantly enhance data collection, facility performance, and energy management. This approach ensures that resources are used effectively and waste is minimized. Meanwhile, implementing a predictive maintenance platform enables early warnings before failures occur, further elevating safety levels. This shift from passive repairs to proactive prevention not only protects assets but also contributes to a more sustainable environment.

透過為現有樓宇設施整合智能自動化系統，例如低壓電櫃、空調通風系統和升降機監控系統，有助顯著提升數據收集、設施表現及能源管理的成效，確保有效善用能源並盡可能減少浪費。此外，預測性保養平台可在故障發生前發出早期警報，進一步提高安全水平。從被動維修改為主動預防，不僅能保護資產，更有助創造更加可持續的環境。

Advanced Electrical Management System (PQEMS)
先進電氣配電系統 (PQEMS)

The existing ACB/MCCB/MCB panel can be modified with an IIoT platform to optimize power system stability and management, leading to energy savings.

現有的ACB/MCCB/MCB配電櫃可經IIoT平台改動，以提升電力系統的穩定性和加強管理，實現節能效益。



Advanced Pump / HVAC Panel
先進泵 / HVAC控制系統

Commonly used in water pumps and HVAC systems, Mitsubishi Electric's VFD has a built-in PLC function allowing programming control logic and replacing traditional electrical relays.

三菱電機的VFD內建PLC功能，便於透過編程控制並取代傳統的繼電器系統，常應用於水泵和HVAC系統。

Advanced Elevator Monitoring System
先進升降機監控系統

The majority of elevators are equipped with standalone information systems. However, Mitsubishi Electric PLC offers a single-platform monitoring solution that gathers and consolidates elevator data from across IoT systems.

大多數升降機都擁有獨立的信息系統。三菱電機PLC的單一監控平台則可收集和整合其他IoT系統的升降機信息。



To remain competitive in the building management systems sector, companies are increasingly relying on smart technologies and advanced automation solutions. To support this transition, Mitsubishi Electric harnesses technological innovation to deliver a highly advanced range of solutions with superior performance and outstanding energy-saving capabilities.

隨着各界企業日益重視智能科技及先進的自動化方案，務求在樓宇管理系統方面保持競爭力，三菱電機採用創新科技，推出一系列性能及節能表現卓越的高端技術產品，以支持企業轉型。

Low-voltage Circuit Breaker – WS series 低電壓斷路器 — WS系列

Mitsubishi Electric's Low-voltage Circuit Breaker delivers outstanding performance and a higher breaking capacity to better address customers' needs. Users can easily access power data through IoT and AI when connected to a network device, such as a Smart Power System.

三菱電機的低電壓斷路器效能卓越，可提供更高的斷流容量，以滿足客戶需求。用戶將斷路器接駁至智能電力系統等網絡裝置，便可透過物聯網和人工智能輕鬆取得電力數據。



Energy-saving Data Collecting Server – Ecoweb Server III 節能數據收集伺服器 — Ecoweb伺服器 III



The Ecoweb Server is a data collection server that supports energy saving and IoT management with visualization, target value management and demand control functions. It can also connect to preventive devices and automation systems, creating a smart solution within the BMS System.

EcoWeb伺服器能夠收集數據，配備可視化、目標數值管理及需求控制等功能，有助節省能源及管理物聯網。伺服器可連接預防性裝置及自動化系統，為BMS系統構建智能方案。

Inverters (Variable Frequency Drives) – FREQROL 800 series 變頻器 — FREQROL 800系列

Variable frequency power supply units are designed to easily and flexibly change the rotation speed of induction and IPM motors. Each inverter is equipped with a programmable controller that supports customization and connects to the BMS system for improved energy efficiency.

變頻器組件經過特別設計，可輕鬆靈活調節感應式馬達及內置式永磁馬達的轉速。每個變頻器均配備可編程控制器，以支援不同設備的獨特需要，並可連接BMS系統以促進能源效益。



Programmable Logic Controllers – MELSEC series 可編程控制器 – MELSEC系列

The MELSEC Series PLC is equipped with a unique function that allows multiple CPUs to be mounted simultaneously. The controller is able to keep up with system demands and configurations through prospective control and network systems, enhancing overall machine operation efficiency.

MELSEC可編程控制器配備獨特的多重CPU功能，可同時安裝多個CPU。控制器透過預期控制及網絡系統，滿足不同系統的需求及配置，有效提升機器整體的運作效率。



Diamond Controls

Diamond Controls is an advanced Direct Digital Control solution built on the powerful Niagara Framework. It delivers seamless integration, precise building automation, real-time supervision, advanced alarming, data logging, and intelligent energy management. The robust, internet-ready platform ensures superior comfort, reliability, and efficiency in commercial and industrial facilities.

Diamond Controls直接數位控制解決方案專為樓宇管理而設，建基於強大的Niagara Framework。它能無縫整合多種樓宇系統與設備，提供精準自動化控制、即時監控、預警報、數據記錄及智能能源優化功能。無論用於商業或工業設施，Diamond Controls的穩健網絡平台皆可帶來卓越舒適、穩定可靠和高效節能的管理效益。



SCADA Software – ICONICS GENESIS64 SCADA 軟件 – ICONICS GENESIS64



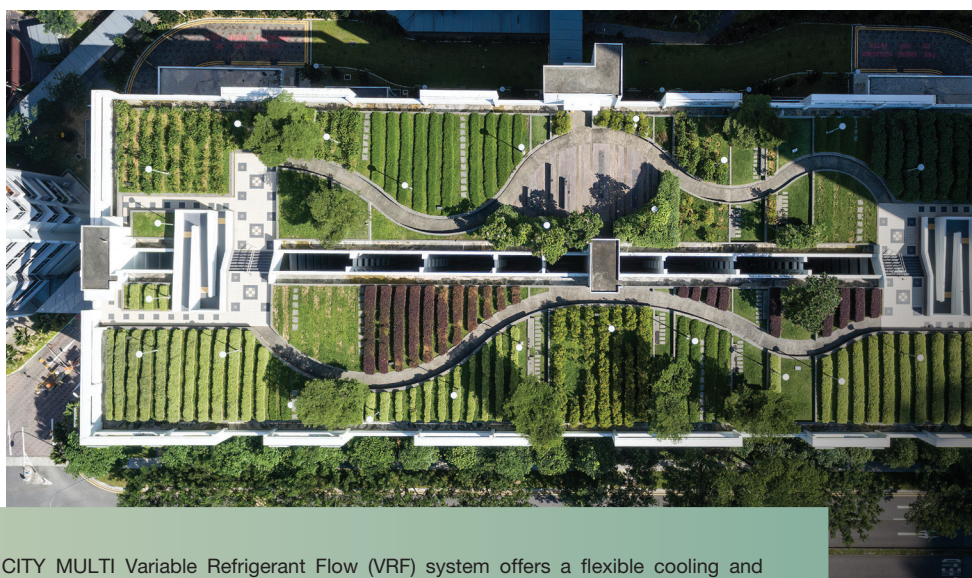
ICONICS is one of Mitsubishi Electric group companies. The ICONICS GENESIS64 suite delivers outstanding performance with OPC, BACnet, Modbus, and open standard database connectivity. GENESIS64 allows operators, executives, and IT professionals to view integrated real-time manufacturing data, energy consumption data, and business information via a secure web-enabled visualization dashboard.

ICONICS是三菱電機的附屬公司。GENESIS64系列在OPC、BACnet、Modbus及開放式標準數據連接方面表現卓越，允許操作人員、行政人員和IT專業人員透過安全的網絡可視化平台，檢視經整合的實時生產數據、耗能數據和業務資訊。

Mitsubishi Electric's trusted air conditioning and ventilation systems are the product of choice across countless residential, commercial and public buildings in Hong Kong and Macau. Easy to install and operate, our high-performance, reliable and energy-saving cooling and ventilation solutions can be customized for any project size.

三菱電機的空調及通風系統一直深受香港及澳門的客戶信賴，是兩地家居、商業和公共設施的不二之選。系統容易安裝、操作簡單，配備高效、可靠和節能的製冷及通風方案，並能因應項目規模而度身訂造。

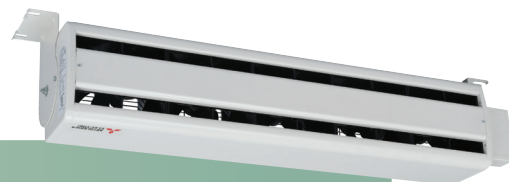
CITY MULTI VRF System
CITY MULTI變頻多聯式分體空調系統



The CITY MULTI Variable Refrigerant Flow (VRF) system offers a flexible cooling and heating solution, designed for a broad range of commercial building applications. Inverter compressor technology delivers exceptional efficiency and energy savings, while the sophisticated design complements almost any interior style.

CITY MULTI變頻多聯式分體空調系統為商業大廈提供靈活的變頻冷暖方案。系統高效的變頻壓縮技術帶來無與倫比的節能效益，其設計精巧，適合融入不同的室內風格。

Air Conducting Fan
空氣傳送扇



Our Air Conducting Fan (ACF) is a piece of add-on equipment which supports ventilators and air conditioners with the effective extraction of exhaust gases and improves the airflow and ventilation in large public areas such as car parks. The ACF uses an innovative ductless system that enables clean air to circulate freely while the ambient temperature can be precisely controlled through the fan's high-level transfer capacity.

空氣傳送扇是換氣通風扇及空調機的輔助裝置，有助排走廢氣及改善室內空氣流通，適用於停車場等大型公眾場所。空氣傳送扇採用創新的無管道系統，可保持新鮮空氣流通，並透過強大的空氣傳送能力精準控制室內溫度。



LOSSNAY Energy Recovery Ventilator 樂思奈熱回收通風設備

Developed and refined over 30 years, the LOSSNAY heat exchange system reduces energy losses from the ventilation. The unit supports lower energy consumption by reducing the overall heat load, extracting stale air and recovering the heating or cooling energy to either warm or cool incoming fresh air without affecting the humidity.

樂思奈熱回收通風設備是三菱電機30多年來反復研發及改良的成果，有效減少換氣時的能源流失。透過減少整體的熱負荷和排走廢氣，設備可在不影響濕度的情況下回復製熱或製冷的能源，帶來溫暖或清涼的鮮風，從而減少能源消耗。



“Jet Towel” Hand Dryer 噴射式乾手機



20 years of technological advancements and ongoing design improvements have gone into the high-efficiency, low-noise Jet Towel Hand Dryer. The latest version dries hands as quickly as 396km/hour tornado winds, removing any residual water in a matter of seconds, while using less energy than conventional models.

20年來，三菱電機不斷提升技術水平和改良設計，製造出高效寧靜的噴射式乾手機。最新一代產品能以龍捲風式氣流（達至每小時約396公里）吹乾雙手，只需數秒就可以吹走殘留水分，比傳統型號更節省能源。

From as early as the 1930s, Mitsubishi Electric has enjoyed a solid global reputation for its technologically advanced, reliable, safe and comfortable elevators and escalators. In Hong Kong in particular, Mitsubishi Electric has been the go-to brand for elevators and escalators in public and private buildings and transportation hubs, impacting a significant percentage of Hong Kong's citizens every single day.

早於1930年代，三菱電機推出先進可靠、安全舒適的升降機及自動梯，自此享譽全球。其升降機及自動梯尤其深受香港客戶推崇，為不少公共與私人樓宇以至交通樞紐的必用之選，日以繼夜為市民提供卓越非凡的運輸服務。



Elevator – DOAS Integrated with Security Gate
升降機 — 門禁聯動式目的層預報系統

Mitsubishi Destination Oriented Allocation System (DOAS) allows passengers to select their destination floor before entering the elevator. This approach prevents congestion in lift cars and reduces the overall waiting and travel time. Meanwhile, the DOAS with integrated security gates allows passengers to register their destination floor by presenting a card at the entrance gate card reader, further enhancing both the passenger experience and building security.

三菱目的層預報系統 (DOAS) 讓乘客進入升降機前預先選定目標樓層，藉此進行分流，避免升降機過度擁擠，並減少整體等候及乘搭時間。此外，跟保安閘聯動的DOAS可讓乘客通過閘門時自動登記目標樓層，方便乘客同時加強樓宇保安。

Modernization – Elevators and Escalators 優化工程 – 升降機與自動梯

With 60 years of serving customers in Hong Kong, Mitsubishi Electric continues to deliver high-quality products, incorporating the latest advancements and continually raising standards in terms of safety, performance, reliability, energy saving and technology. We provide a full guarantee of compatibility and comprehensive technical support to ensure smooth implementation for all modernization projects.

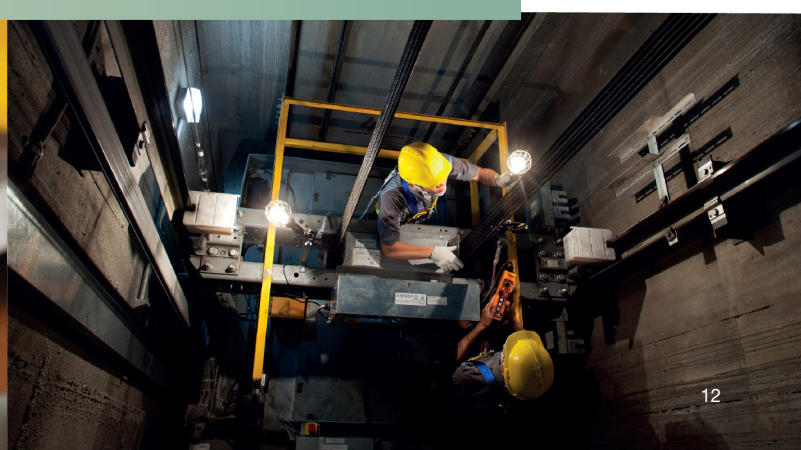
三菱電機服務香港客戶60年，通過提供優化方案持續帶來優質產品及嶄新科技，務求不斷提升產品安全、性能、可靠度、節能及技術等的標準。三菱電機保證產品的兼容性，並提供全面技術支援，確保所有優化項目得以順利進行。



Remote Elevator Maintenance System – M's BRIDGE 升降機遙距保養系統 – M's BRIDGE

Passengers' safety is our prime concern. The remote elevator maintenance system, M's BRIDGE, enables our technical team to closely monitor elevator operations around the clock for greater peace of mind. The system periodically performs a remote assessment of elevator operating data through the mobile network, ensuring operational efficiency and allowing fast service provision, while reducing routine maintenance downtime.

三菱電機重視乘客安全，旗下技術團隊透過升降機遙距保養系統 (M's BRIDGE)，全天候密切監控升降機的運作，讓乘客倍感安心。系統利用流動網絡定時遙距評估升降機的運作數據，以保障服務效率及快速提供維修支援，並縮短因例行保養而暫停運作的時間。



Building Comfortable & Sustainable Homes

建設舒適和可持續的家居環境

Mitsubishi Electric offers an ever-growing range of high-quality, innovative, and user-friendly home appliances, delivering new standards of comfort and convenience to the homes of our customers, while reducing the environmental impact. Our products are manufactured in stringently assessed, environmentally conscious facilities, providing safe and energy-saving solutions for everyday life.

三菱電機不斷開發優質、創新及以用家為本的家庭電器，確立舒適便利家居的新標準，同時減少對環境的影響。旗下所有產品皆經嚴格評估、秉承環保理念的設施出廠，務求為大眾日常生活提供安全且節能的方案。

Home Appliances 家庭電器

霧ヶ峰



Plasma Quad Plus Split-Type Air Conditioner
分體式空調配備升級版等離子電極淨化技術

The elegant, high-performance split-type air conditioners in the Kirigamine LN Series are equipped with the new Plasma Quad Plus air cleaning system, which assists in filtering bacteria, viruses, molds and allergens, as well as dust and PM2.5 microparticles. The air-purifying unit can be conveniently cleaned either with a conventional vacuum cleaner or with water, reducing environmental impact.

霧ヶ峰LN分體式空調系列外形時尚高貴、性能卓越，並配備全新升級版等離子電極淨化器，有助過濾空氣中的細菌、病毒、霉菌、致敏原、塵埃及PM2.5懸浮粒子。內置的淨化器可使用普通吸塵機或清水清潔，保養簡易，有效減少對環境的影響。

SMART
AUTO



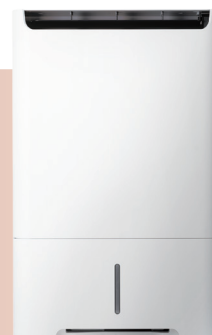

Inverter Refrigerator with Smart Auto Mode
自動調控模式變頻雪櫃

Smart Auto mode monitors users' habits through sensors in each compartment, and is able to analyze, predict and automatically adjust each compartment's preservation function accordingly. Besides convenience for the user, this feature enhances preservation effectiveness and promotes energy savings.

Smart Auto自動調控模式透過每個儲存室的感應器來偵測用家的使用習慣，再進行分析、預測和自動調控各儲存室的保鮮功能，不但方便切合用戶需要，更提升保鮮及節能效果。

BIKUKAN
美空感

Air-purifying Dehumidifier
空氣淨化抽濕機



Mitsubishi Electric is dedicated to integrating technology and comfort into every living space. The BIKUKAN air purifying dehumidifier delivers both striking aesthetics and an innovative Smart Auto function. Equipped with smart flaps, an air purifying filter, and an activated carbon filter, it automatically switches between dehumidification and air purification to maintain a fresh and clean home environment.

三菱電機致力引入嶄新技術，讓每個生活空間更添舒適。「美空感」空氣淨化抽濕機外形美觀，具備創新的Smart Auto功能，配合Smart Flaps精確調節及空氣淨化濾網和活性炭濾網，可自動切換抽濕與空氣淨化功能，讓家居保持清爽潔淨。



Premium Safety Electric Fan
優質安全電風扇

The Mitsubishi Electric Fan offers a reliable, quiet, and energy-efficient solution for every home. The high-performance fan is fabricated from fire-retardant materials and features a closed motor and double fuse to enhance safety and ensure ease of use.

三菱電機電風扇為每個家居提供可靠、寧靜及高能源效益的方案。風扇效能卓越，使用阻燃物料製成，並配備封閉式馬達及雙重保險絲，確保安全易用。







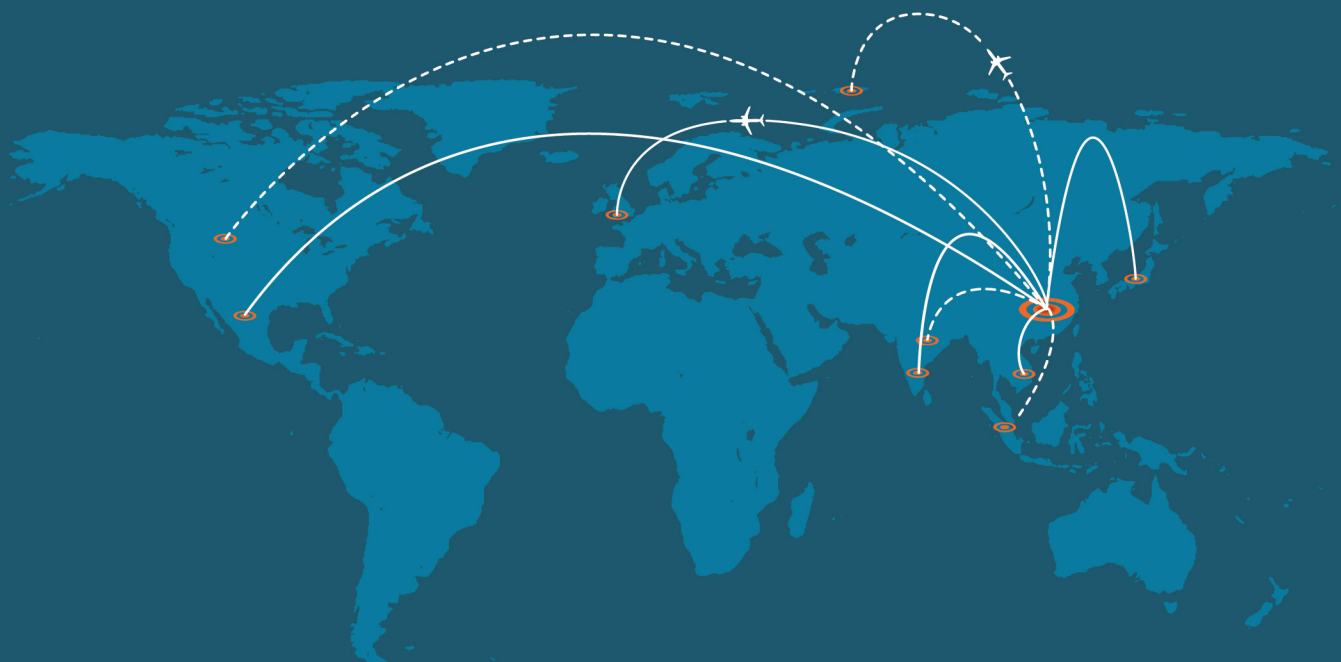
Procurement

採購

Our procurement office in Hong Kong is one of eight Mitsubishi Electric International Procurement Offices (IPOs), sourcing components, materials and services from Mainland suppliers to be used in our factories across the globe.

三菱電機設有八個國際採購辦事處，香港的採購部是其中之一，負責物色內地供應商以採購零件、原材料及篩選服務，以供我們在世界各地的工廠使用。

<p>Terminal Block 端子台</p> 	<p>Current Transformer 電流互感器</p> 	<p>Magnet Wire 銅線</p> 	<p>Busbar 匯流排</p> 	<p>VIP Panel 真空絕緣板</p> 	
<p>PCB 電路板</p> 	<p>Remote Control 遙控器</p> 	<p>Float switch 浮球開關</p> 	<p>Plastic molding part 注塑件</p> 	<p>Transformer & Inductor 變壓器及電感器</p> 	<p>Fan motor 風扇摩打</p> 



Customer Service

客戶服務

Air Conditioning and Home Appliances — Service Center 空調和家電 — 維修服務中心



Mitsubishi Electric Quality (MEQ) is a measure of our professionalism, passion for care and dedication to excellence in everything we do. We put the needs of our customers first at all times, offering hands-on, responsive customer service.

三菱電機品質 (MEQ) 代表高度專業、熱情至誠及精益求精的處事標準。無論任何情況，我們都會以客為先，竭誠提供務實和及時的客戶服務。

To maintain our standards of service and drive true customer satisfaction, we are guided by the following four pledges:

為保持服務質素並讓客戶稱心滿意，我們遵循以下四大原則：

Compassion and
friendliness towards all
待人以禮，殷勤友善



Quick Response to
all service enquiries
任何查詢，快速回應

One visit —
problem fixed
一次到訪，問題解決



Attentive care for
all customers
關懷客戶，應您所需



Elevators and Escalators — Maintenance Services 升降機和自動梯 — 維修保養服務



Our 24-hour service centre provides a round-the-clock emergency service for our customers, promptly dispatching an experienced service team to wherever they are needed in the territory. Familiar with all Mitsubishi Electric equipment, the technical team is able to address any technical problem efficiently, effectively and in a timely manner.

三菱電梯的24小時服務中心為客戶提供全天候緊急服務，不論地點遠近都可即時派遣經驗豐富的團隊到場支援。技術團隊熟悉三菱電機所有設備，無論面對任何技術問題均能夠妥善處理，高效快捷。





Sustainability – Corporate Social Responsibility

可持續發展 – 企業社會責任

At Mitsubishi Electric, Sustainability is a core pillar of our corporate philosophy. By creating shared value with our stakeholders, we are able to drive profitability, while minimizing our environmental impact and contributing to the well-being of the communities we work in.

As a socially responsible corporation, Mitsubishi Electric Hong Kong champions a wide range of Corporate Social Responsibility initiatives, including educational projects and environmental schemes. We also actively support the development of our next generation in the areas of science and technology, arts and culture, and sports.

在三菱電機，可持續發展是企業理念的核心支柱。我們與持份者創造共同價值，務求推動盈利，同時致力減少對環境的影響，造福社群。

三菱電機（香港）主動承擔社會責任，積極推行各種企業社會責任活動，支持不同的教育項目和環保計劃。我們亦致力培育下一代在科學及科技、文化與藝術以及體育方面的發展。

We've collaborated with the Little Light Art Project to launch the "Creative Eco Kids" program since 2021, promoting biodiversity and resource recycling while enhancing children's awareness of environmental protection and developing their creativity.

自2021年起，我們與Little Light Art Project合作，推行「創意環保小靈精」計劃，推廣生物多樣化及資源回收。同時，計劃亦旨在提升小朋友的環境保護意識，鼓勵他們發揮創意。



We've collaborated with the Hong Kong Federation of Youth Groups to launch the "V.Cares Youth Volleyball Program" since 2022, providing young people with volleyball experience alongside personal growth opportunities. We hope the initiative will bring about positive change for participants, both physically and mentally.

自2022年起，我們與香港青年協會攜手推出「V.Cares青年排球計劃」，讓青少年體驗打排球的樂趣，協助促進個人成長，希望活動可為參加者的身心帶來正面改變。

We've sponsored the "Mitsubishi Electric Eco Tech Cup", organized by the Chinese University of Hong Kong, since 2023, encouraging students and the general public to harness their STEM knowledge to design creative solutions to environmental concerns.

自2023年起，我們贊助由香港中文大學主辦的「三菱電機綠續創科盃」，鼓勵學生和公眾運用科技知識提出富創意的解決方案，以應對環境問題。



Milestones

里程碑

Mitsubishi Electric's offering in Hong Kong, Macau and the Mainland has grown through the years, delivering greater product diversity, deeper innovation and more responsive customer care to enhance the daily lives and well-being of our citizens.

三菱電機多年來深耕細作，在香港、澳門及內地的業務持續增長，不斷提供更多元化的產品、更創新的科技及更貼心的客戶服務，務求為大眾提升生活。

<p>Mitsubishi Electric Corporation established group company in Hong Kong 三菱電機株式會社在香港成立集團公司</p>	1966	<p>Supplied the first Doppler LiDAR System to the Hong Kong Observatory at Hong Kong International Airport 為香港天文台提供首部多普勒激光雷達系統，並用於香港國際機場</p>
<p>Introduced Chillers to Hong Kong, the first market expansion outside Japan 將冷水機引入香港，首次從日本拓展海外市場</p>	1967	<p>2016 Introduced Robot to Smart Food vending machines in Hong Kong 將機械人引入智能食品自動售賣機領域</p>
<p>Supplied and installed elevators in Stage 1 of Mei Foo Sun Chuen, a large-scale private housing estate in Hong Kong 為香港大型私人住宅美孚新村第一期提供及安裝升降機</p>	1968	<p>Launched the Modular Chiller in Hong Kong 將模組式冷水機引入香港</p>
<p>Supplied and installed 132 kV Gas Insulated Switchgear at CLP's substation 為中電變電站提供及安裝132kV氣體絕緣開關</p>	1976	<p>2017 Supplied and installed the mega-sized Diamond Vision® LED screen on the façade of SOGO Department Store in Hong Kong's Causeway Bay 為香港銅鑼灣崇光百貨提供大型Diamond Vision® LED屏幕，並於外牆安裝</p>
<p>Supplied and installed the first set of 275kV/ 11kV 60 MVA SF6 gas transformers in Hong Kong's Sheung Wan Zone Substation 為香港上環分區變電站提供及安裝第一台275kV/11kV 60MVA SF6氣體變壓器</p>	1990	<p>2018 Secured a high-speed elevator modernization project in the Bank of China Tower, Hong Kong 成功獲得香港中銀大廈高速升降機優化工程</p>
<p>Supplied and installed spiral escalators in Times Square, which became the first spiral escalator installation project in Hong Kong. 為時代廣場提供及安裝弧形自動梯，開創香港弧形自動梯的先河</p>	1994	<p>2020 Installed the Mitsubishi Destination Oriented Allocation System (DOAS) integrated with Security Gate in Manulife Place, Hong Kong 於香港宏利廣場安裝三菱門禁聯動式目的層預報系統</p>
<p>Introduced "City-Multi" variable refrigerant flow multi-type air conditioners 引入CITY-MULTI變頻多聯式空調系統</p>	1997	<p>2020 Received the first Station Energy Saving Inverter ("S-EIV®") order from Hong Kong railway company, the MTR Corporation – the first order outside Japan 首次獲日本以外的鐵路公司(香港鐵路有限公司)採購車站節能換流系統S-EIV®</p>
<p>Collaborated with the HKSAR Government on the Y2K school project using the "Lossnay Heat Recovery Ventilator" 與香港特區政府合作，為「千禧校舍計劃」安裝樂思奈熱回收通風設備</p>	1999	<p>2021 Launched "KIRIGAMINE", LN Series, split-type room air conditioners equipped with plasma quad plus, dual-barrier coating, and three color options on indoor units in Hong Kong 在香港推出「霧ヶ峰」LN系列的分體式空調，配備全新升級版等離子電極淨化器及複合納米防污塗層，並有三款室內機顏色可供選擇</p>
<p>Supplied the first set of 550kV hybrid type GIS (H-GIS) to the Mainland 為內地提供第一台550kV複合型氣體絕緣開關(H-GIS)</p>	2003	<p>2024 Supplied and installed elevators and escalators at The Henderson, a new architectural landmark in Central, Hong Kong. Elevators featured a unique double-deck design and destination control with patented technologies 為香港中環的新地標The Henderson提供並安裝升降機及自動梯。升降機具獨特的雙層設計，並配置擁有專利技術的目的層預報系統</p>
<p>Began IQ platform solution operations in the Mainland 開展內地的IQ平台解決方案業務</p>	2006	<p>Launched BIKUKAN Air Purifying Dehumidifier, equipped with SMART AUTO function in Hong Kong 於香港推出「美空感」空氣淨化抽濕機，配備SMART AUTO運轉模式</p>
<p>Began e&eco-F@ctory systems operations in the Mainland 開展內地的e&eco-F@ctory系統業務</p>	2010	<p>2025 Launched a new made-in-Japan refrigerator equipped with the SMART AUTO function for one-touch optimal preservation 推出全新日本製雪櫃，配備SMART AUTO自動調控模式，可一鍵預測最合適的保鮮功能</p>
<p>Introduced the remote elevator maintenance system "ELE-First" 引入升降機遙距保養系統ELE-First</p>	2013	<p>2025 Launched the Power Quality Energy Monitoring System ("PQEMS") in Hong Kong to elevate the LV power system's safety and reliability through data utilization 於香港推出「電力及能源管理系統(PQEMS)」，利用數據提升低壓電力系統的安全性和可靠性</p>
<p>Supplied the first set of Terminal Doppler Weather Radar to the Hong Kong Observatory at Brothers Point Station 為香港天文台大鵬角雷達站提供首部機場多普勒天氣雷達</p>	2014	<p>2026 60th anniversary celebration of Mitsubishi Electric Group Companies in Hong Kong 三菱電機集團公司服務香港60周年慶典</p>



English

Learn more about us!
了解我們更多！



中文

MITSUBISHI ELECTRIC (HONG KONG) LIMITED
三菱電機(香港)有限公司